

PRIVATE & SEMI-PRIVATE TENNIS LESSONS

To schedule private or semi-private tennis lessons, please contact your preferred tennis pro directly.

Private Lessons *24 Hour Cancellation Policy*

	Head Pro	Pro
30 MINUTES	\$53 (\$57)	\$41 (\$46)
60 MINUTES	\$96 (\$101)	\$73 (\$78)
90 MINUTES	\$144 (\$151)	\$104 (\$109)

Semi-Private Lessons *24 Hour Cancellation Policy*

30 minute	Head Pro	Pro
2 people	\$30 (\$33)	\$25 (\$30)
3 people	\$22 (\$25)	\$18 (\$25)
4+ people	\$18 (\$20)	\$15 (\$20)

60 minute	Head Pro	Pro
2 people	\$52 (\$58)	\$42 (\$47)
3 people	\$37 (\$43)	\$32 (\$37)
4+ people	\$29 (\$36)	\$21 (\$28)

90 minute	Head Pro	Pro
2 people	\$79 (\$90)	\$58 (\$63)
3 people	\$54 (\$64)	\$41 (\$46)
4+ people	\$42 (\$55)	\$34 (\$41)

TEACHING PROFESSIONALS

HEAD TENNIS PROFESSIONALS

Marty Maehr, *Tennis Coordinator* | X 125
marty.maehr@libertyathletic.net

Dan Goldberg | X 141
dan.goldberg@libertyathletic.net

Paul Ripley | X 116
paul.ripley@libertyathletic.net

TENNIS PROFESSIONALS

Dean Boodakian | X 148
dean.boodakian@libertyathletic.net

Maria Nivia | X 173
maria.nivia@libertyathletic.net

PART TIME TENNIS PROFESSIONALS

Contact the front desk at X 100 to schedule with:

Bettina Briceno

Eric Gajar

Kaylee Tucker

TENNIS COURTS & FEES

Liberty hosts 6 indoor hard courts, 4 outdoor hard courts, and one indoor ball machine.

Tennis Court Reservations - Indoor court reservations may be made up to 2 days in advance through the Liberty Mobile App, online services or front desk.

Outdoor courts (*seasonal*) may be reserved up to one day in advance through the front desk, and are free of charge.

Permanent Court Time - We offer Permanent Court Time during the indoor season for groups who wish to play weekly at the same time. The season starts in September and ends in May. Please contact Lichee St. Pierre at ext. 121 for information.

Indoor Court Fees		
Mon. - Fri.	5:30am-4:00pm	\$32/hr.
Mon. - Fri.	4:00pm-Close	\$36/hr.
Sat. & Sun.	Open-Close	\$36/hr.
Ball Machine	Open-Close	\$36/hr.
Special Court & Ball Machine Fees		
Tues. (Members Only)	5:30am-8:00am	\$0 free!*
Mon. & Wed.	5:30am-8:00am	\$16/hr. Courts \$18/hr. Ball M.
Jr. Competitive Players		
Walk-on time	Open-Close	\$20/hr.
Mon. - Fri. (Members Only)	5:30am-9:00am	\$0 / Court or Ball Machine
Outdoor Courts		
Mon. - Sun.	Seasonal	\$0 free!

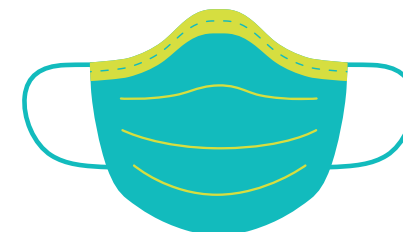
All courts may be reserved through the Liberty Mobile App, online services or by calling the front desk at (734) 665-3738.

**24 hour cancellation / no show policy: Should someone fail to cancel the FREE court / ball machine within 24 hours, they will be charged half of the regular court time (non-primetime) costs to the member(s) who are listed on the reservation.*

Youth Tennis

Fall 2020

revised October 22, 2020



Facial coverings are not required while playing tennis indoors, however, facial coverings are required to and from the courts and when 6 feet of distance can't be maintained.

Due to social distancing requirements, we are asking parents and caregivers to drop off children for tennis programs. We welcome and encourage members to work out during the program or return for pick up at the conclusion of the program. We appreciate your understanding and cooperation.



2975 W. Liberty Rd., Ann Arbor, MI 48103
Phone 734.665.3738 • Fax 734.665.6353
www.libertyathletic.net

TENNIS CLINICS

Our tennis clinics are instructional in nature and emphasize strength in fundamental skills. Instruction, drilling, and interactive play using basic strokes are key techniques in our clinics. All clinics are open to both members and nonmembers. If you are not sure which level is appropriate, please contact our Tennis Coordinator, Marty Maehr, at 734-665-3738 x125. Registration is available through the Concierge.

RED BALL LEVEL II (Mr. Pee Wee Advance)

Players must graduate from Red Ball Level I or be first time players between the ages of 6-8 in order to enroll in this class.

Players continue to improve their coordination, agility and balance while beginning to focus on movement and footwork. We work to improve consistency of strokes and begin to learn how to place the ball side-to-side, deep, and short before graduating to Orange Ball Level III. *48-Hour Cancellation Policy*

REGISTRATION DATES

Session 1 - Member 10/7 | Non-Member 10/14

Session 2 - Member 11/2 | Non-Member 11/9

Wednesdays	11:00am-12pm	Bettina Briceno
------------	--------------	-----------------

11/4-11/18	3mtgs	\$72 (\$84) Session 1
12/2-12/16	3mtgs	\$72 (\$84) Session 2

Saturdays	10:00-11:00am	Maria Nivia
-----------	---------------	-------------

10/31-11/14	3mtgs	\$72 (\$84) Session 1
11/21-12/12	3mtgs	\$72 (\$84) Session 2 *Excludes 11/28

Sundays	2:30-3:30pm	Marty Maehr
---------	-------------	-------------

11/1-11/15	3mtgs	\$72 (\$84) Session 1
11/22-12/13	3mtgs	\$72 (\$84) Session 2 *Excludes 11/29

TENNIS CLINICS

ORANGE BALL LEVEL III (Super Pee Wee)

Players must graduate from Red Ball Level I & II or be first time players between the ages of 8-10 in order to enroll in this class.

Students are introduced to topspin and underspin on both forehand and backhand strokes with an emphasis on developing technique, rallying skills and beginning point play. This group uses the orange lower compression ball along with the regulation 36 inch net and 60 foot court specified for ages 10 and under. A 25 inch racquet is recommended for this clinic. In order to participate in this level, players must have the necessary strength and skills to hit and play within court dimensions. *48-Hour Cancellation Policy*

REGISTRATION DATES

Session 1 - Member 10/7 | Non-Member 10/14

Session 2 - Member 11/2 | Non-Member 11/9

Wednesdays	12:00-1:00pm	Bettina Briceno
------------	--------------	-----------------

11/4-11/18	3mtgs	\$72 (\$84) Session 1
12/2-12/16	3mtgs	\$72 (\$84) Session 2

Saturdays	11am-12:00pm	Dean Boodakian
-----------	--------------	----------------

10/31-11/14	3mtgs	\$72 (\$84) Session 1
11/21-12/12	3mtgs	\$72 (\$84) Session 2 *Excludes 11/28

Sundays	1:30-2:30pm	Marty Maehr
---------	-------------	-------------

11/1-11/15	3mtgs	\$72 (\$84) Session 1
11/22-12/13	3mtgs	\$72 (\$84) Session 2 *Excludes 11/29

GREEN DOT BALL LEVEL IV (Junior Beginner)

Players must graduate from Red & Orange Ball Levels or be first time players between the ages of 11-12 in order to enroll in this class.

This group uses green dot low compression balls on the regulation 78 foot court and 36 inch net. Players must have the skills and strength to play within these dimensions. Students work to improve topspin and underspin ground stroke technique. Emphasis is placed on developing the serve and initiating point play on the regulation sized court. *48-Hour Cancellation Policy*

REGISTRATION DATES

Session 1 - Member 10/7 | Non-Member 10/14

Session 2 - Member 11/2 | Non-Member 11/9

Saturdays	10:30am-12:00pm	Marty Maehr
-----------	-----------------	-------------

10/31-11/14	3mtgs	\$108 (\$126) Session 1
11/21-12/12	3mtgs	\$108 (\$126) Session 2 *Excludes 11/28

Sundays	1:30-3:00pm	Dean Boodakian
---------	-------------	----------------

11/1-11/15	3mtgs	\$108 (\$126) Session 1
------------	-------	-------------------------

Sundays	1:30-2:30pm	Dean Boodakian
	2:30-3:30pm	Dean Boodakian

11/22-12/13	3mtgs	\$72 (\$84) Session 2 *Excludes 11/29
-------------	-------	---------------------------------------

TENNIS CLINICS

YELLOW BALL LEVEL V (Junior Intermediate)

Players must graduate from Red, Orange & Green Levels or be first time players between the ages of 13-14 in order to enroll in this class.

This is the final step in our clinic process before advancing to the Junior Competitive Program. At this level all of the basic skills are reviewed and players are given an opportunity to use their skills in a variety of playing situations. Emphasis is on technique, consistency and mastering play in competitive settings. In order to advance, players must demonstrate their proficiency with topspin, underspin and serve. This program uses regulation yellow tennis balls on a 78 foot court and 36 inch net.

48-Hour Cancellation Policy

REGISTRATION DATES

Session 1 - Member 10/7 | Non-Member 10/14

Session 2 - Member 11/2 | Non-Member 11/9

Sundays	3:30-5:00pm	Marty Maehr
---------	-------------	-------------

11/1-11/15	3mtgs	\$108 (\$126) Session 1
11/22-12/13	3mtgs	\$108 (\$126) Session 2 *Excludes 11/29

JR. COMPETITIVE

Liberty's Junior Competitive Program is an elite program for youth who are preparing for, or currently involved in, competitive match play. To join one of these groups, players must 'qualify' by having reached a certain tennis skill level.

Red Group is available for nonmembers, while Maize, Silver and Blue Groups require Liberty membership. Enroll by session, by invitation only. To schedule an evaluation or for more information, please contact Paul Ripley at 734-665-3738 ext 116.

RED Group	Tue & Thur: 4:00-5:30pm
MAIZE Group	Mon & Wed: 5:00-6:30pm
SILVER Group	Tue: 5:30-7:00pm & Fri: 4:00-5:30pm
BLUE Group	Mon & Wed: 3:30-5:00pm

2020 Jr. Competitive Session Dates

[1] 11/2/20 - 11/30/20 *Excludes 11/25, 11/26, 11/27
[2] 12/1 - 12/18

Jr. Competitive fees are billed prior to the start of each session. If you have changes to your playing schedule, contact Paul Ripley at least one week before the start of a new session. Credits will not be issued for changes made after a session's start date.