

REGISTRATION DATES

| | Member | Non-Member |
|-----------|-----------|------------|
| Session 1 | Cancelled | |
| Session 2 | 1/19 | 1/19 |
| Session 3 | 2/1 | 2/8 |
| Session 4 | 2/22 | 3/1 |

TENNIS CLINICS

Our tennis clinics are instructional in nature and emphasize strength in fundamental skills. Instruction, drilling, and interactive play using basic strokes are key techniques in our clinics. All clinics are open to both members and nonmembers. If you are not sure which level is appropriate, please contact our Tennis Coordinator, Marty Maehr, at 734-665-3738 x125. Registration is available through the Concierge.

RED BALL LEVEL II (Mr. Pee Wee Advance)

Players must graduate from Red Ball Level I or be first time players between the ages of 6-8 in order to enroll in this class.

Players continue to improve their coordination, agility and balance while beginning to focus on movement and footwork. We work to improve consistency of strokes and begin to learn how to place the ball side-to-side, deep, and short before graduating to Orange Ball Level III. *48-Hour Cancellation Policy*

| Wednesdays | 11:00am-12pm | Bettina Briceno |
|------------|--------------|------------------------|
| 1/20-2/10 | 4mtgs | \$96 (\$112) Session 2 |
| 2/17-3/3 | 3mtgs | \$72 (\$84) Session 3 |
| 3/10-3/24 | 3mtgs | \$72 (\$84) Session 4 |

| Saturdays | 10:00-11:00am | Maria Nivia |
|-----------|---------------|-----------------------|
| 1/23-2/6 | 3mtgs | \$72 (\$84) Session 2 |
| 2/20-3/6 | 3mtgs | \$72 (\$84) Session 3 |
| 3/13-3/27 | 3mtgs | \$72 (\$84) Session 4 |

| Sundays | 2:30-3:30pm | Marty Maehr |
|-----------|-------------|-----------------------|
| 1/24-2/7 | 3mtgs | \$72 (\$84) Session 2 |
| 2/21-3/7 | 3mtgs | \$72 (\$84) Session 3 |
| 3/14-3/28 | 3mtgs | \$72 (\$84) Session 4 |

TENNIS CLINICS

ORANGE BALL LEVEL III (Super Pee Wee)

Players must graduate from Red Ball Level I & II or be first time players between the ages of 8-10 in order to enroll in this class.

Students are introduced to topspin and underspin on both forehand and backhand strokes with an emphasis on developing technique, rallying skills and beginning point play. This group uses the orange lower compression ball along with the regulation 36 inch net and 60 foot court specified for ages 10 and under. A 25 inch racquet is recommended for this clinic. In order to participate in this level, players must have the necessary strength and skills to hit and play within court dimensions.

| Wednesdays | 12:00-1:00pm | Bettina Briceno |
|------------|--------------|------------------------|
| 1/20-2/10 | 4mtgs | \$96 (\$112) Session 2 |
| 2/17-3/3 | 3mtgs | \$72 (\$84) Session 3 |
| 3/10-3/24 | 3mtgs | \$72 (\$84) Session 4 |

| Saturdays | 11:00am-12pm | Dean Bodakian |
|-----------|--------------|-----------------------|
| 1/23-2/6 | 3mtgs | \$72 (\$84) Session 2 |
| 2/20-3/6 | 3mtgs | \$72 (\$84) Session 3 |
| 3/13-3/27 | 3mtgs | \$72 (\$84) Session 4 |

| Sundays | 1:30-2:30pm | Marty Maehr |
|-----------|-------------|-----------------------|
| 1/24-2/7 | 3mtgs | \$72 (\$84) Session 2 |
| 2/21-3/7 | 3mtgs | \$72 (\$84) Session 3 |
| 3/14-3/28 | 3mtgs | \$72 (\$84) Session 4 |

GREEN DOT BALL LEVEL IV (Junior Beginner)

Players must graduate from Red & Orange Ball Levels or be first time players between the ages of 11-12 in order to enroll in this class.

This group uses green dot low compression balls on the regulation 78 foot court and 36 inch net. Players must have the skills and strength to play within these dimensions. Students work to improve topspin and underspin ground stroke technique. Emphasis is placed on developing the serve and initiating point play on the regulation sized court.

| Saturdays | 10:30am-12:00pm | Marty Maehr |
|-----------|-----------------|-------------------------|
| 1/23-2/6 | 3mtgs | \$108 (\$126) Session 2 |
| 2/20-3/6 | 3mtgs | \$108 (\$126) Session 3 |
| 3/13-3/27 | 3mtgs | \$108 (\$126) Session 4 |

| Sundays | 1:30-2:30pm | Dean Boodakian |
|-----------|-------------|-----------------------|
| | 2:30-3:30pm | Dean Boodakian |
| 1/24-2/7 | 3mtgs | \$72 (\$84) Session 2 |
| 2/21-3/7 | 3mtgs | \$72 (\$84) Session 3 |
| 3/14-3/28 | 3mtgs | \$72 (\$84) Session 4 |

TENNIS CLINICS

YELLOW BALL LEVEL V (Junior Intermediate)

Players must graduate from Red, Orange & Green Levels or be first time players between the ages of 13-14 in order to enroll in this class.

This is the final step in our clinic process before advancing to the Junior Competitive Program. At this level all of the basic skills are reviewed and players are given an opportunity to use their skills in a variety of playing situations. Emphasis is on technique, consistency and mastering play in competitive settings. In order to advance, players must demonstrate their proficiency with topspin, underspin and serve. This program uses regulation yellow tennis balls on a 78 foot court and 36 inch net.

| Sundays | 3:30-5:00pm | Marty Maehr |
|-----------|-------------|-------------------------|
| 1/24-2/7 | 3mtgs | \$108 (\$126) Session 2 |
| 2/21-3/7 | 3mtgs | \$108 (\$126) Session 3 |
| 3/14-3/28 | 3mtgs | \$108 (\$126) Session 4 |

JR. COMPETITIVE

Liberty's Junior Competitive Program is an elite program for youth who are preparing for, or currently involved in, competitive match play. To join one of these groups, players must 'qualify' by having reached a certain tennis skill level.

Red Group is available for nonmembers, while Maize, Silver and Blue Groups require Liberty membership. Enroll by session, by invitation only. To schedule an evaluation or for more information, please contact Paul Ripley at 734-665-3738 ext 116.

| GROUP | DAY | TIME |
|-------------|------------|-------------|
| Red | TUE & THU | 4:00-5:30pm |
| Maize | MON & WED | 5:00-6:30pm |
| Silver/Blue | WEDNESDAYS | 3:30-5:00pm |
| Silver/Blue | FRIDAYS | 4:00-5:30pm |

2021 Jr. Competitive Session Dates

- [3] 1/18 - 1/29 (Enroll per time)
- [4] 2/1 - 2/26 *Excludes 2/12, 2/15
- [5] 3/1 - 3/26

Jr. Competitive fees are billed prior to the start of each session. If you have changes to your playing schedule, contact Paul Ripley at least one week before the start of a new session. Credits will not be issued for changes made after a session's start date.

PRIVATE & SEMI-PRIVATE TENNIS LESSONS

To schedule private or semi-private tennis lessons, please contact your preferred tennis pro directly.

Private Lessons *24 Hour Cancellation Policy*

| | Head Pro | Pro |
|------------|---------------|---------------|
| 30 MINUTES | \$53 (\$57) | \$41 (\$46) |
| 60 MINUTES | \$96 (\$101) | \$73 (\$78) |
| 90 MINUTES | \$144 (\$151) | \$104 (\$109) |

Semi-Private Lessons *24 Hour Cancellation Policy*

| | Head Pro | Pro |
|------------------|-------------|-------------|
| 30 minute | | |
| 2 people | \$30 (\$33) | \$25 (\$30) |
| 3 people | \$22 (\$25) | \$18 (\$25) |
| 4+ people | \$18 (\$20) | \$15 (\$20) |
| 60 minute | | |
| 2 people | \$52 (\$58) | \$42 (\$47) |
| 3 people | \$37 (\$43) | \$32 (\$37) |
| 4+ people | \$29 (\$36) | \$21 (\$28) |
| 90 minute | | |
| 2 people | \$79 (\$90) | \$58 (\$63) |
| 3 people | \$54 (\$64) | \$41 (\$46) |
| 4+ people | \$42 (\$55) | \$34 (\$41) |

TEACHING PROFESSIONALS

HEAD TENNIS PROFESSIONALS

Marty Maehr, *Tennis Coordinator* | X 125
marty.maehr@libertyathletic.net

Dan Goldberg | X 141
dan.goldberg@libertyathletic.net

Paul Ripley | X 116
paul.ripley@libertyathletic.net

TENNIS PROFESSIONALS

Dean Boodakian | X 148
dean.boodakian@libertyathletic.net

Maria Nivia | X 173
maria.nivia@libertyathletic.net

PART TIME TENNIS PROFESSIONALS

Contact the Concierge at X 100 to schedule with:

Bettina Briceno
Eric Gajar
Kaylee Tucker

TENNIS COURTS & FEES

Liberty hosts 6 indoor hard courts, 4 outdoor hard courts, and one indoor ball machine.

Tennis Court Reservations

Indoor court reservations may be made up to 2 days in advance through the Liberty Mobile App, online services or front desk.

Outdoor courts (*seasonal*) may be reserved up to one day in advance through the Liberty Mobile App, online services or front desk, and are free of charge.

Permanent Court Time

We offer Permanent Court Time during the indoor season for groups who wish to play weekly at the same time. The season starts in September and ends in May. Please contact Lichee St. Pierre at ext. 121 for additional information.

| Indoor Court Fees | | |
|-----------------------------------|---------------|--|
| Mon. - Fri. | 5:30am-4:00pm | \$32/hr. |
| Mon. - Fri. | 4:00pm-Close | \$36/hr. |
| Sat. & Sun. | Open-Close | \$36/hr. |
| Ball Machine | Open-Close | \$36/hr. |
| Special Court & Ball Machine Fees | | |
| Tues. | 5:30am-8:00am | \$0 free!** (Members Only) |
| Mon. & Wed. | 5:30am-8:00am | \$16/hr. Courts \$18/hr. Ball M. |
| Jr. Competitive Players | | |
| Walk-on time | Open-Close | \$20 / Court or Ball Machine |
| Mon. - Fri. | 5:30am-9:00am | \$0 / Court or Ball Machine (Members Only) |
| Outdoor Courts | | |
| Mon. - Sun. | Seasonal | \$0 free! |

All courts may be reserved through the Liberty Mobile App, online services or by calling the front desk.

**24 hour cancellation / no show policy: Should someone fail to cancel the FREE court / ball machine within 24 hours, they will be charged half of the regular court time (non-primetime) costs to the member(s) who are listed on the reservation.*

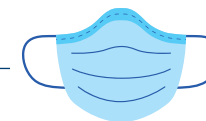
Program fees are based on the participant's membership status.

1st Fee = Member Rate
2nd Fee (in parentheses) = Nonmember Rate

48-hour cancellation policy applies to all tennis clinics.

Youth Tennis Winter 2021

revised January 15, 2021



Facial coverings must be worn at all times while in the club (*except while swimming or showering*). Due to social distancing requirements, we are asking parents and caregivers to drop off children for tennis programs. We welcome and encourage members to work out during the program or return for pick up at the conclusion of the program. We appreciate your understanding and cooperation.



2975 W. Liberty Rd., Ann Arbor, MI 48103
Phone 734.665.3738 • Fax 734.665.6353
www.libertyathletic.net